

PHIRI

Population Health Information
Research Infrastructure

WP9 Foresight: modelling and scenarios

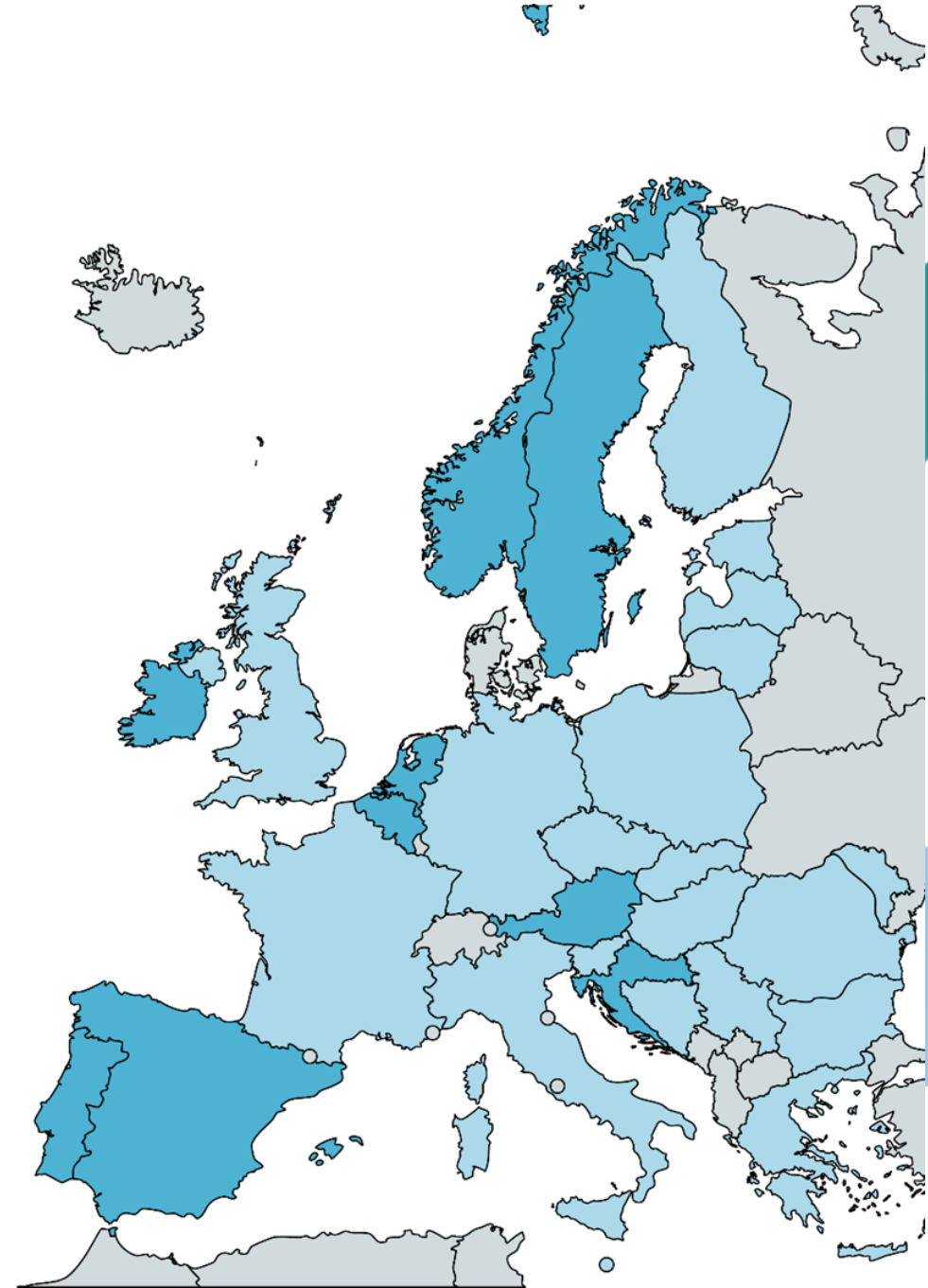
PHIRI Road Show

8 April 2022



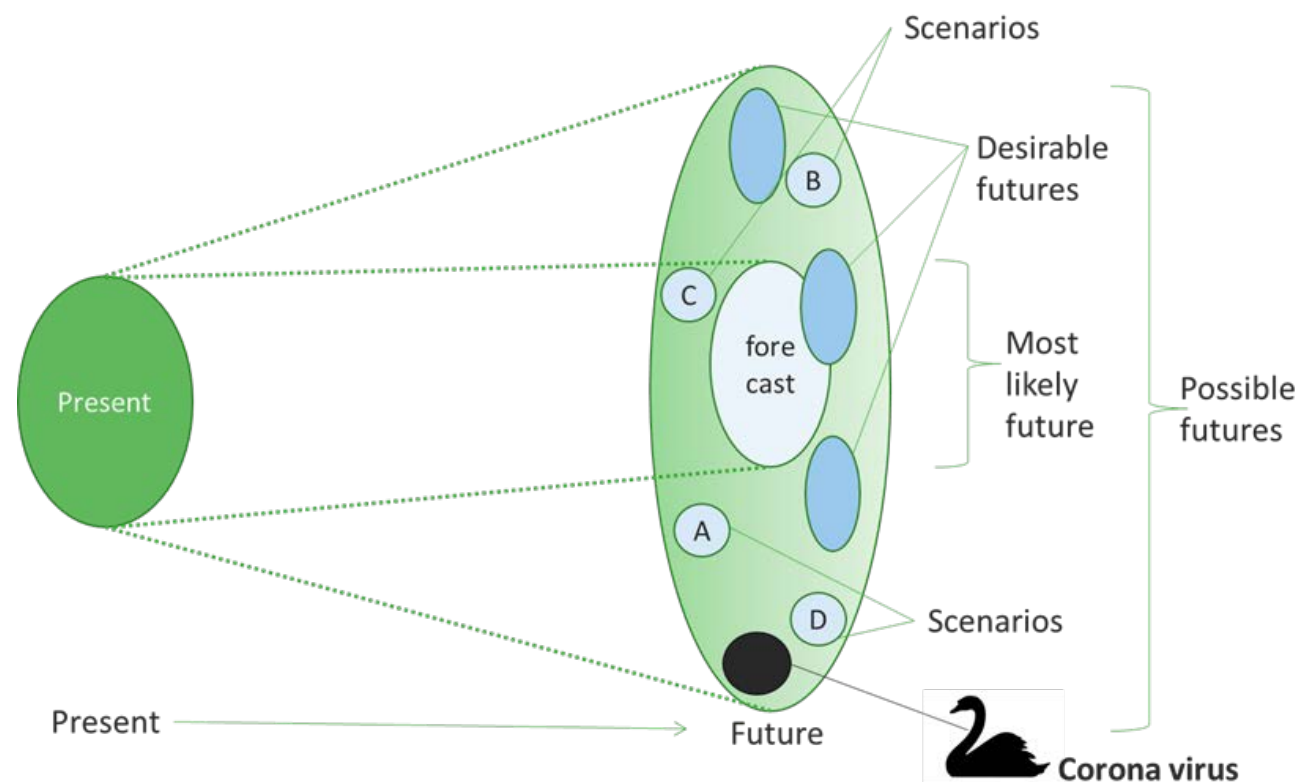
National Institute for Public Health
and the Environment
Ministry of Health, Welfare and Sport

www.phiri.eu



What is public health foresight?

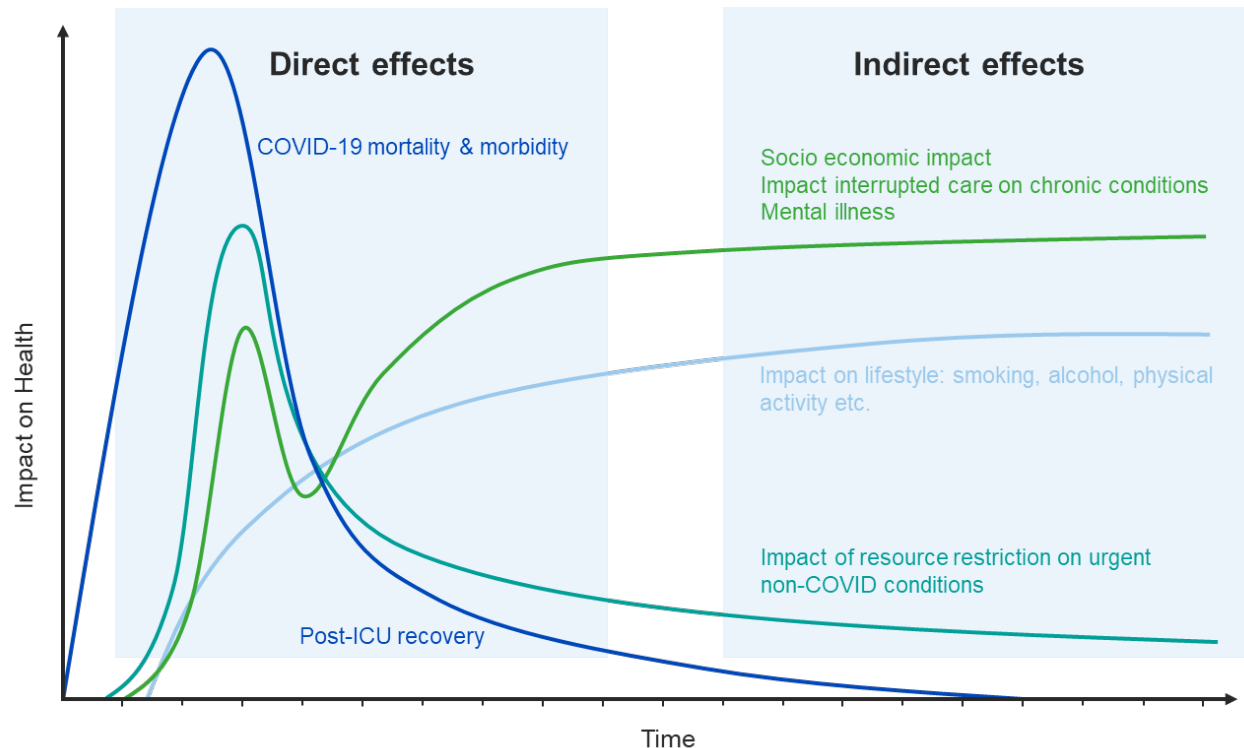
- A systematic, participatory and vision-building process, exploring the future to anticipate plausible trends and support present-day actions
- A tool! To explore the wider impacts of the COVID-19 pandemic



Why do we want public health foresight?

better understanding of the future

basis for policy makers to act



Indirect effects of coronavirus crisis on health

Impact on health care

- Lower levels of health care services
- Higher disease burden of cataract and arthrosis
- Cancer screening temporarily on hold



Changes in life style



Impact of corona crisis on mental health





PHIRI and foresight



Our aim:

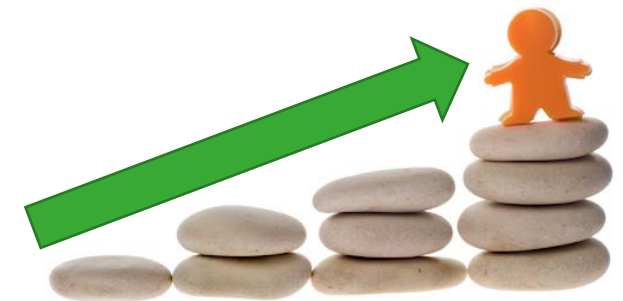
To support countries in doing their own foresight study



Our approach and actions:

1. Inventory of foresight activities
2. Foresight capacity building
3. Guidance in applying foresight to develop scenarios
4. Identifying promising policy strategies to anticipate the future (translating the information into knowledge)

Stepwise approach





PHIRI and foresight : 1. inventory

November 2020 – April 2021



 Create overview of current (inter)national foresight activities, capacities and capacity needs across EU countries and establish a foresight network

-  • Survey
• Desk research

-  • In most MS participating in the survey there have been foresight studies
• Few countries have a well-established capacity in public health foresight, most MS have limited and some no capacity in foresight
• Needs for capacity building: general approach, use of data, advocacy
• Professional network within the project: started

PHIRI and foresight : 2. Building capacity

March 2021 – October 2021



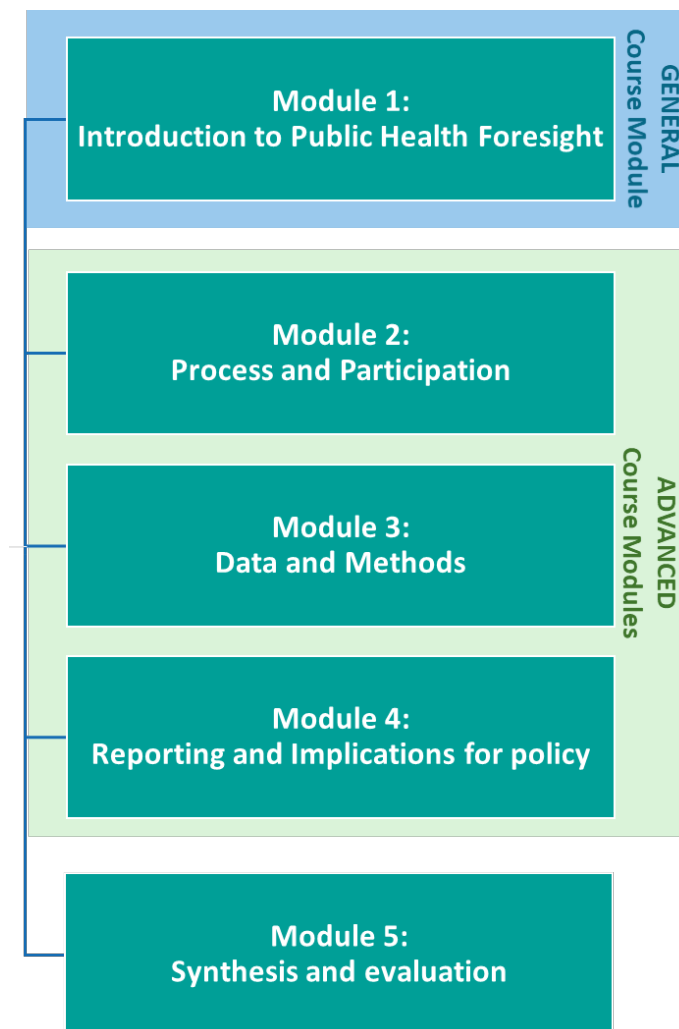
- For EU research: level and strengthen capacity
- For participants: understand foresight methodology and how to apply it



- General introduction, advanced modules
- Mix of lectures, examples and exercises





- 15 - 60 participants per module, across 24 MS
- Course booklet and videos available via www.phiri.eu/wp9



PHIRI and foresight : 3. Develop your PHFS!

January 2022 – January 2023

 Supporting scenario development

-  • Template and Guide
 - Regular sessions
 - guided, exchange
 - learning together
 - Tailor-made sessions
-
-  • Presenting key uncertainties and challenges
 - Synthesis and lessons for Europe

Public Health Foresight Template

Name:	Topic is addressed in:
Country:	
Affiliation:	
Contextual information	Module 2
Objective of the foresight study	Module 2
Topic:	
General issue:	
Sub issues:	
Main target group(s)	Module 2
Conceptual model	Module 3
Indicators	Module 3
Driving forces (by impact and uncertainty)	Module 3
Time horizon	Module 3
Spatial unit	Module 3
Identifying most important uncertainties (normative, cognitive)	Module 2/3
Scenario logics	Module 3
Scenario type (quantitative, qualitative)	Module 2
Stakeholders	Module 2
Data	Module 3
Tools and instruments	Module 3
Projection method(s)	Module 3
Communication strategy	Module 4
Communication products	Module 4
Uptake of results and evaluation	Module 4



**The compact guide
to public health foresight**





Overview of Studies in ‘Develop your PHFS’

Country	Study Topic	Goal
SI	Control of NCD's	Planning as exercise
NL	Update of the 2020 COVID-19 inclusive foresight study	Planning and starting in 2022
RS	PTSD/bereavement and cardiovascular disease	Planning and submit as grant proposal
BE	Indirect health impact of COVID-19	Planning, executing after 2022
AT	Long-term care in Austria	Planning as exercise
SI	Antimicrobial use/resistance	Planning and submit as grant proposal
PT	Digitalization of healthcare	Planning, executing in/after 2022
CZ	Effective screening and early detection of disease and treatment	Planning as exercise
BE	Long-term and indirect health economic impact of COVID-19 on non-COVID-19 patients' health	Planning, executing after 2022
<i>Pending</i>		
NO	Mental health and suicide prevention	Planning as exercise
EL	Transfer of best practices in primary health care (maternal, newborn)	Planning, executing after 2022
BE	Drug policy/preparedness (addiction and illicit drugs)	Planning, starting in 2022
BE	Cancer	Planning, executing after 2022
BA	Control of NCD's	Planning as exercise



PHIRI and foresight : 4. Translation

June 2022 – June 2023



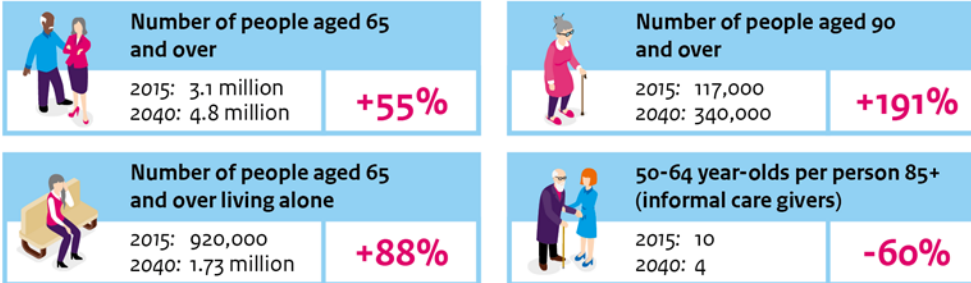
 Supporting the identification of promising policy strategies

- 
- Building on countries' public health foresight studies
 - Policy dialogues

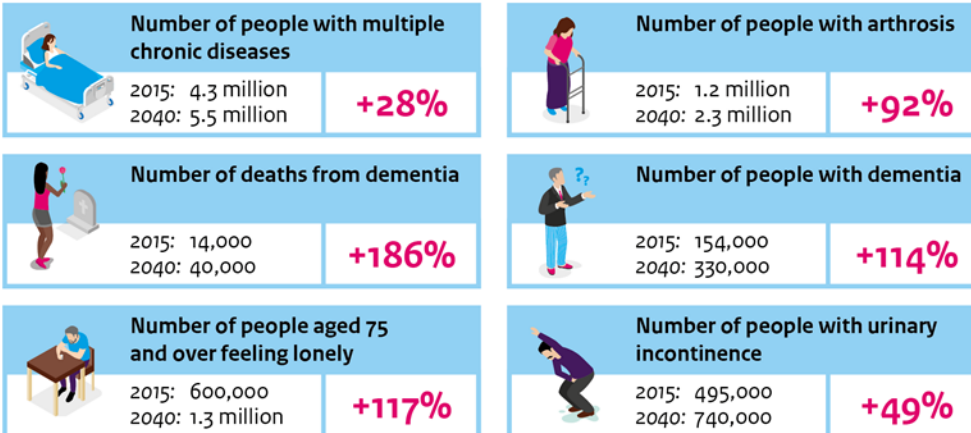
- 
- Fact sheets with recommendations for policy

Impact of the ageing of the population

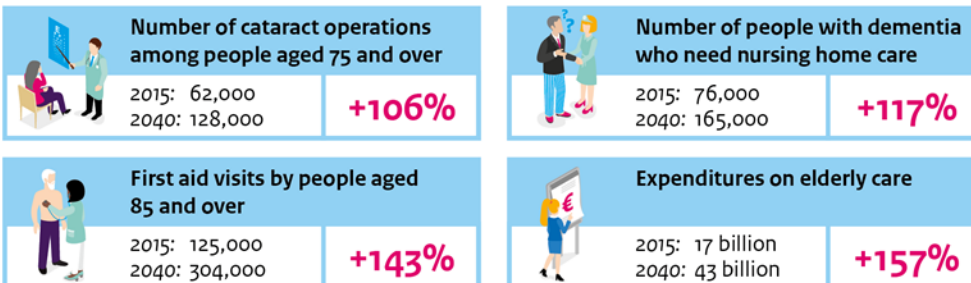
Socio-demographic changes in the population



Consequences for population health



Consequences for healthcare



This infographic shows how population health and healthcare in the Netherlands will develop if historical trends continue without change and no new policies are implemented.

The National Institute for Public Health and the Environment, 2018

Thank you!

www.phiri.eu/wp9

PHIRI.NL@rivm.nl

www.phiri.eu



This project has received funding from the European Union's Horizon 2020 research and innovation programme under grant agreement No 101018317