



PHIRI

Population Health Information
Research Infrastructure

PHIRI stakeholder meeting

WP9 Foresight: scenarios and modeling

Henk Hilderink & Mariken Tjihuis,
on behalf of WP9



National Institute for Public Health
and the Environment
Ministry of Health, Welfare and Sport



UNIVERSIDADE
NOVA
DE LISBOA

www.phiri.eu



This project has received
funding from the European
Union's Horizon 2020
research and innovation
programme under grant
agreement No 101018317

What is PHIRI WP9 about?



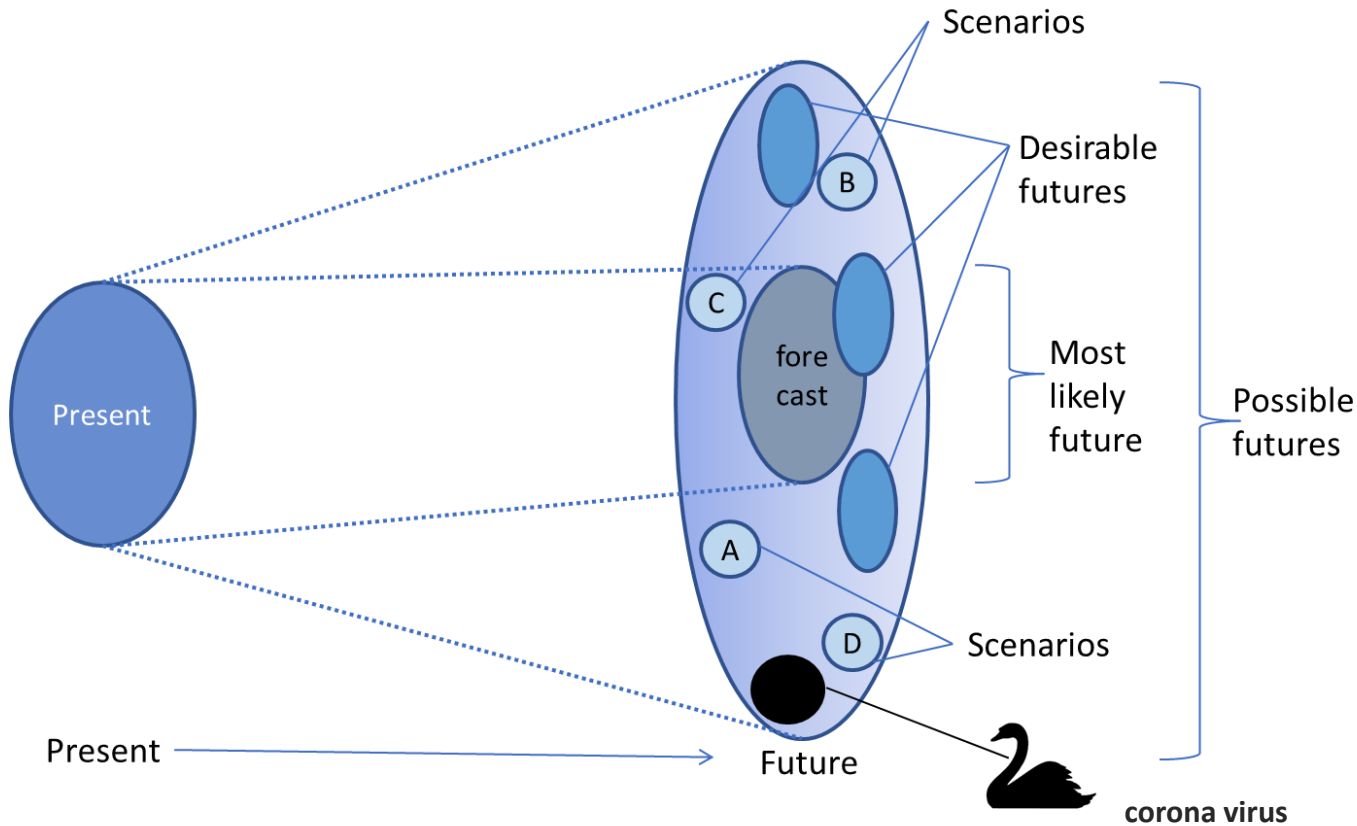
We aim to gain insight in possible future health impacts of the SARS-CoV-2 outbreak by supporting the development of **scenarios** for countries' national situation, and from this collectively also draw lessons for the EU

We seek to level and strengthen European public health foresight capacity and support evidence-informed policy decisions by

1. mapping **direct and indirect effects**
2. using a **broad conceptual model of health and care**
3. on **short and long-term**



Foresight: from present to future



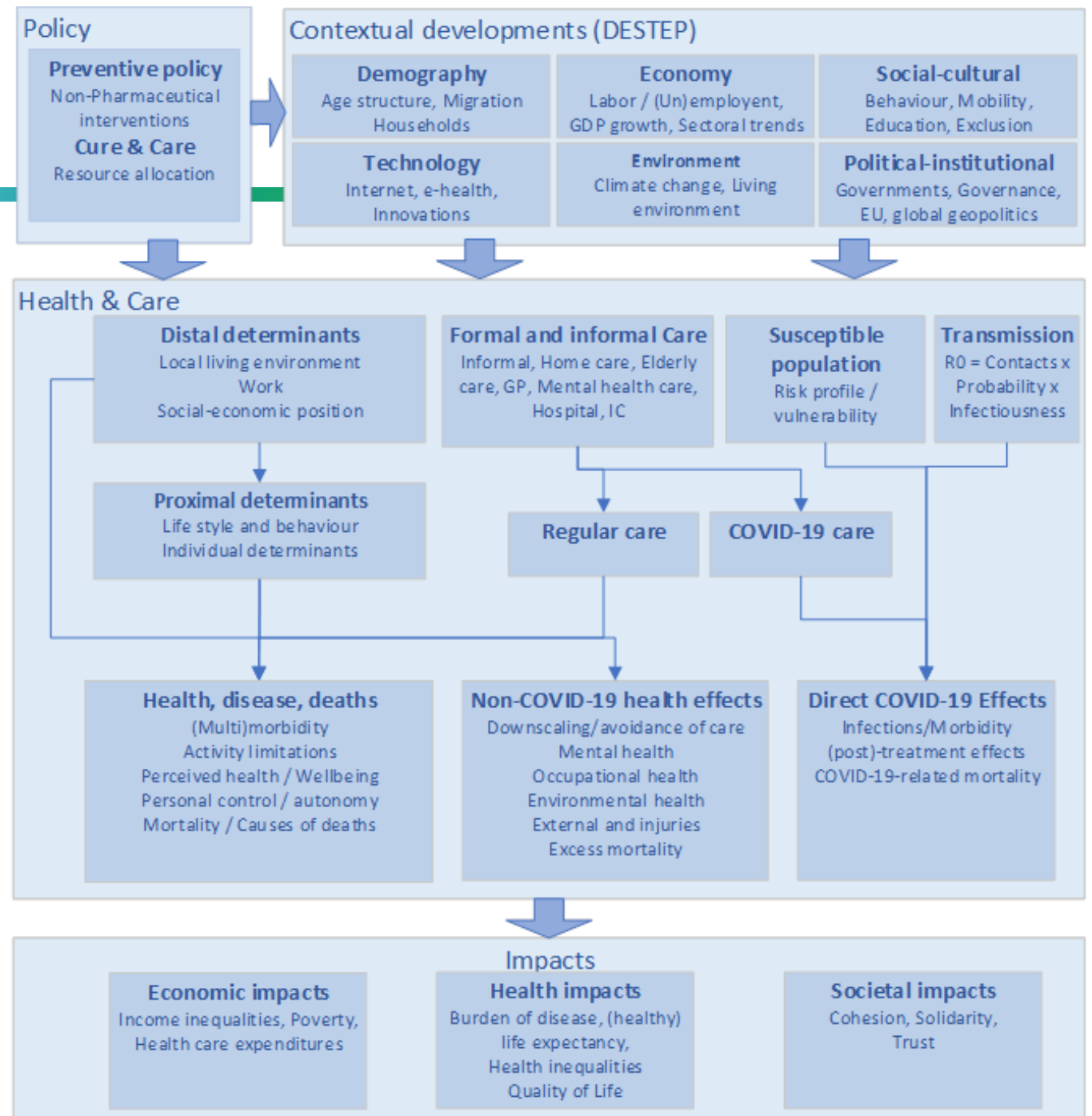
Foresight is a systematic, participatory, future-intelligence-gathering and medium-to-long term vision-building process aimed at enabling present-day decisions and mobilizing joint actions.

Scenario is a coherent, internally consistent, systematic and plausible description of a possible future state of the world.

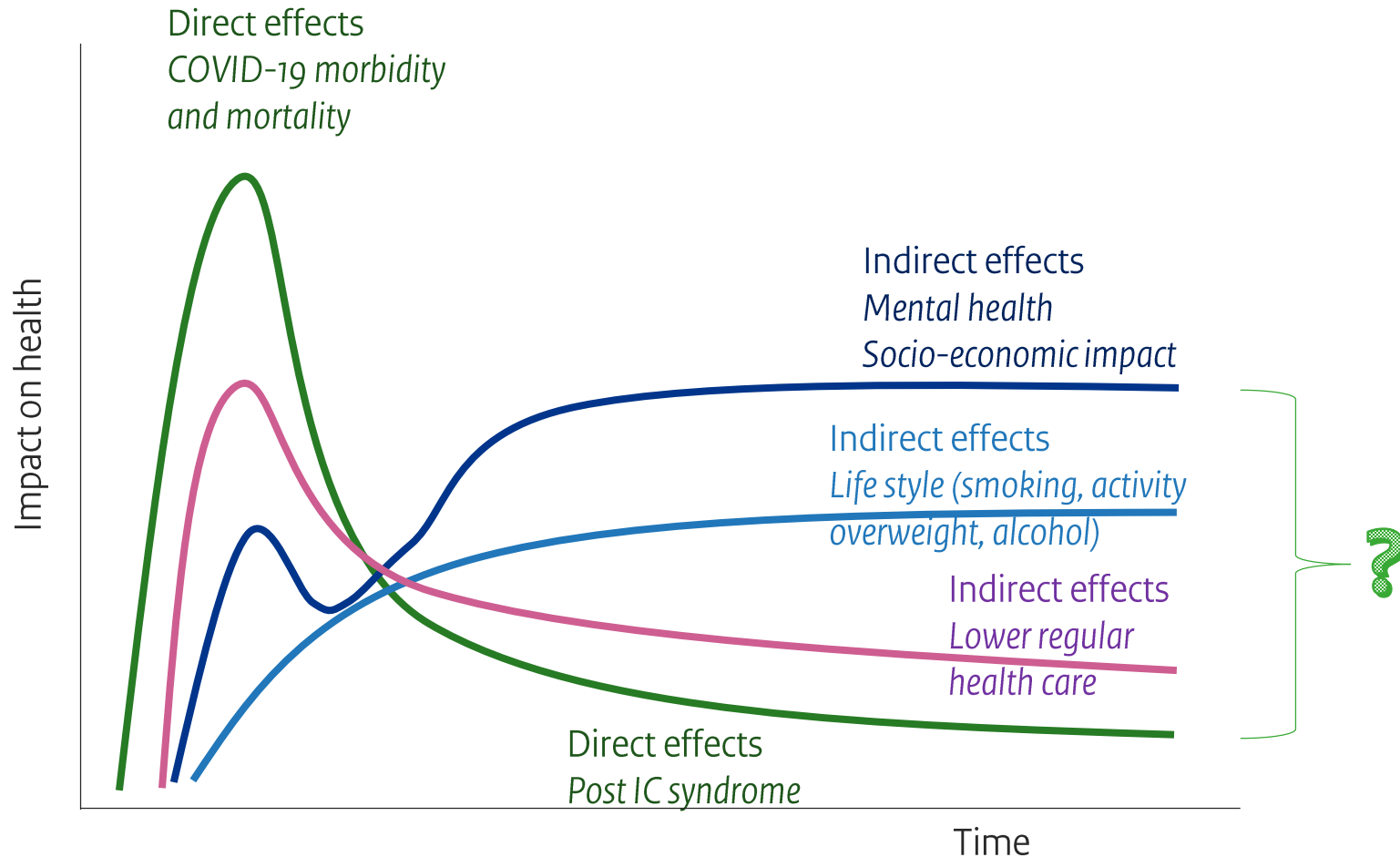
WE DON'T PREDICT THE FUTURE

Broad scope

- DESTEP trends (broad) driving forces for health
- Concept of Health beyond disease and mortality (QoL)
- Short and long term effects
- Direct and indirect effects



Direct and indirect impact on health



What are we facing: most important trends

Key uncertainties

- COVID-19
- Economic growth

And also:

- Technology
- Behaviour
- Poverty/unemployment

And still:

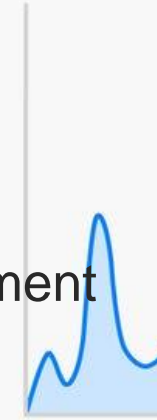
- Geopolitical, climate change, ageing, migration, food production

A collapse in output followed by a slow recovery

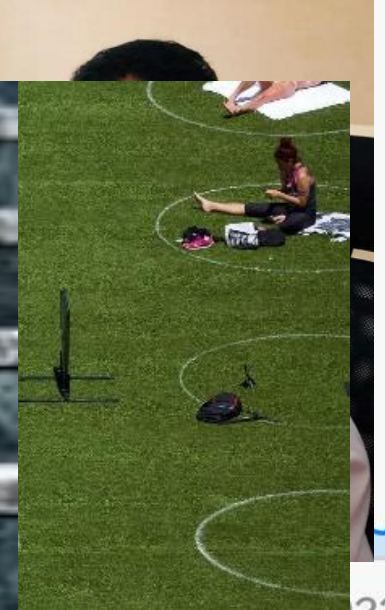
World GDP, index 2019-Q4=100

Scenari

COVID-1



2020



21 2022



For discussion

How can we increase interoperability of infectious disease modelling and modeling of indirect health impacts (e.g. chronic diseases), to have valuable input for scenario development?

Think of:

- common indicators for morbidity and mortality (e.g. Burden of disease)
- common conceptual framework (e.g. same DESTEP approach)

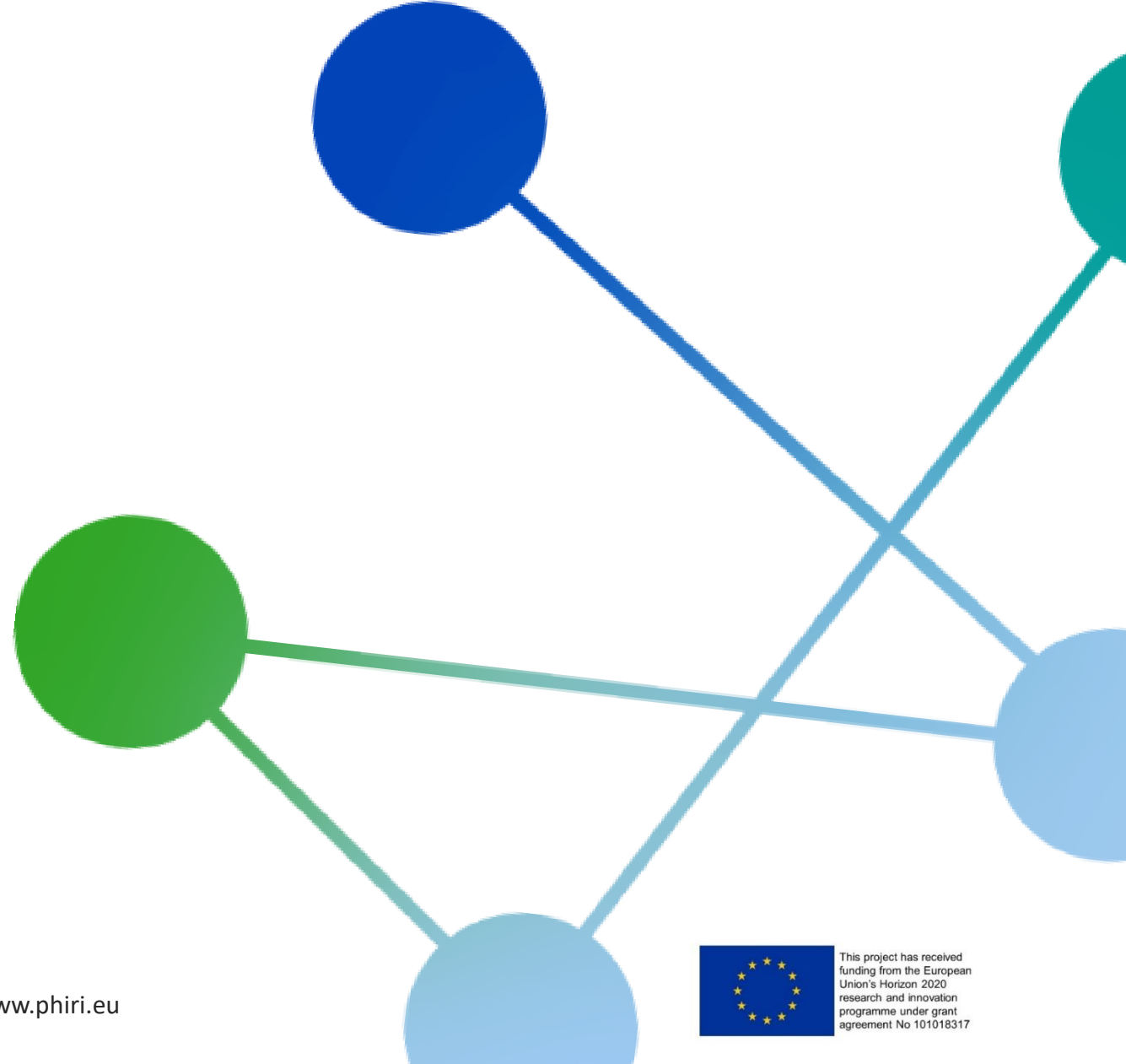


PHIRI

Population Health Information
Research Infrastructure

Thank you for your attention!

PHIRI.NL@rivm.nl





Additional slides





WP9 stepwise approach = tasks



1. Inventory of current foresight activities and initiatives in EU & beyond (scenario studies, modelling, preparedness, other e.g. dashboards)
2. Building foresight capacity (leveling knowledge and networking)
3. Using this capacity to develop scenarios providing insight in potential future challenges (national and pan-European) for public health and care
 - direct and indirect
 - short term (0-5 years) and longer term (5-20 years)
 - route 'in-depth' or route 'general picture'
4. Guiding development of promising policy strategies to anticipate the identified possible future trends or to achieve a more desirable future (translating the knowledge, identify gaps and needs to face preparedness)

Scenario building steps

