

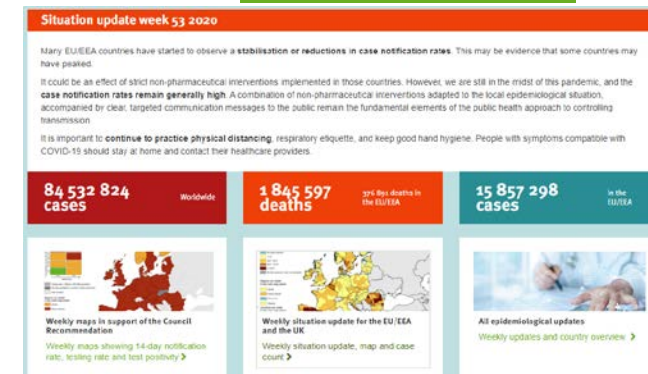
European Centre for Disease Prevention and Control

PHIRI Scientific Stakeholder meeting: Possible areas of ECDC engagement

Howard Needham, Expert-Scientific Liaison, 14 January 2021

1. What do you do with regards to structured exchange of health information on COVID-19 between countries that could be of interest?

- ECDC legally mandated to collect health information on infectious diseases collected by EU/EEA MSs (27MS +3EEA).
- ECDC produces several COVID-19 surveillance outputs (e.g. weekly COVID-19 surveillance report/country overview). **Much of the data is downloadable in open data formats on [ECDC's website](#).**
- Core datasets:
 - **TESSy**: Over 7M COVID-19 cases included in database (Jan 2021)
 - Supplemented by web scraping of public health websites etc.
- Epidemiological data include:
 - Case numbers (COVID-19 cases, deaths, setting of infection).
 - Severity (Hospital and ICU admission, risk factors etc.).
 - Genomic data (WGF): genetic variants.
- Public health response:
 - Testing.
 - Country response measures.
- Data used as a basis of many ECDC outputs: risk assessments/technical guidance/modelling etc.



2. What can we learn from your experience? What should we build on?

- Balance between depth/breadth for core data requirements; requires good understanding of what data is available, what can be collected and shared.
- Maintain awareness of EU level research-related activities to build synergy and avoid duplication....but.....
-no research should be off limits;
 - studies in similar domains but different approaches/methods etc. can enhance knowledge
 - COVID research is vast, and fast moving; overlap may be inevitable.
- Data quality/consistency is key.
- ECDC has limited research capacity, so welcome research that builds PH knowledge base (eg using TESSy data).

3. How would you like to interact with PHIRI? Are there possibilities for interoperability?

- What can ECDC offer?
 - Data sets (Tessy) etc;
 - Expertise (knowledge and understanding of the data but also strong links with COVID network and other agencies)
 - Links to EU-level policy actions; knowledge broker between research and policy at EU level.
- What does ECDC hope to gain:
 - Understanding of MS-led research activities and data sets, and how that could support EU-wide public health goals.
 - Access to data and expertise outside established EU surveillance reporting structures; access ‘new’ data to support public health, and agility for rapid data-led knowledge gain around emerging issues.
 - PHIRI is MS–led; offers unique “intelligence” on emerging concerns/uncertainty in MSs partner organisations- guide ECDC actions.
 - Promote the use of ECDC data & tools.
 - Disseminate ECDC technical outputs and awareness of ECDC activities in MSs activities.